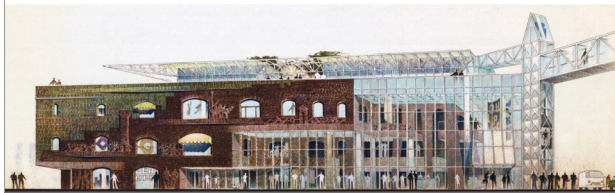
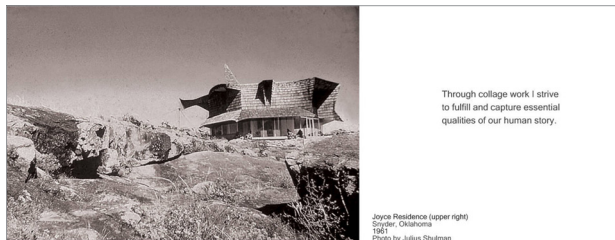


Generations

Six Decades of Collage Art and Architecture Generated with Perspectives from Science

By Herb Greene with Lila Cohen



Generations showcases six decades of Herb Greene's art and architecture informed by his interest in science and history. This "picture book" is organized to showcase large-scale images of Mr. Greene's architectural work alongside his collage paintings and Armature drawings, in a way that reveals the unified philosophy behind all of his work. Its purpose is to tell a story of the important interrelationships between art, science, and philosophy, which is described with simple narrative juxtaposed alongside these images.

Generations engages in an interdisciplinary discourse as a combination of body and mind processes that affect, and are affected by, biological and cultural evolution. The text and images throughout the book build to a concluding section concerning Armatures, which are described as "collage constructions." Armatures constitute a program of citizen participants under the direction of architects and artists to produce an on-going representation of historic continuity in public spaces. Most importantly, the reader learns how the human propensity to learn and grow happens by embracing creative work.

As an architect who studied under the direction of Bruce Goff, the architecture of Herb Greene has received international acclaim and is published worldwide. Alongside his unique architecture are a body of collage paintings, which express the same qualities and philosophies in painted form. His work is an analysis of a history in art and science that has shaped human experience in a mutual exchange.

Lila Cohen is an architect who has collaborated with Herb Greene over the years on creating a platform for his work. Her own work focuses on the nature of human experience as it fits within the context of demanding environmental and socio-economic conditions.